

SENTINEL™ A50

Revolutionary high performance automatic welding helmet



Years of welding have trained you to know exactly what you need in a hood: crucial comfort, large lens, and next generation technology. Every special operation needs special equipment that gets the job done, and when it comes to your helmet, SENTINEL™ is worn by the best.

- Revolutionary Shell Design. High Impact Resistance Nylon
- Halo™ Headgear. Ergonomic, infinitely-adjustable 5 point head gear provides extreme comfort and balance. Low-profile design, central pivot point allows for maximum head clearance while helmet is in the up position
- 100 x 60mm viewing area. 1/1/1/2 – 5-13 ADF
- Color touch screen control panel with 8 separate memory settings and externally activated shade 4 Grind Button
- Hard hat adapter option available for use with ESAB hard hat

Visit **esab.com** for more information.

Welding Process

- Oxy Fuel Cutting
- Plasma Cutting
- Grinding
- Welding, GMAW (MIG/MAG)
- Welding, GTAW (TIG)
- Welding, PAW - Plasma Arc Welding
- Welding, SMAW/MMA (Stick)



*Halo comfort 5 point harness
(Front view)*



High optical class ADF, with colour touch screen interface

Specifications

Cartridge Dimensions	133 x 114 x 9 mm
Viewing Area	100 x 60 mm (3.93 x 2.36 in.)
Lens Shade	DIN 5-8/9-13
Power Supply	Solar cell plus battery replaceable. (2*CR2450 lithium). Alerts when low battery.
Sensors	4
Switch Time	1/25,000 s. from Light to Dark
Classification	1/1/1/2
Standards	DIN plus, CE, EN175, EN 379, EN166, ANSI Z87.1, CSA Z94.3, AS/NZS 1338.1
Weight	640 g (1.4 lbs.)

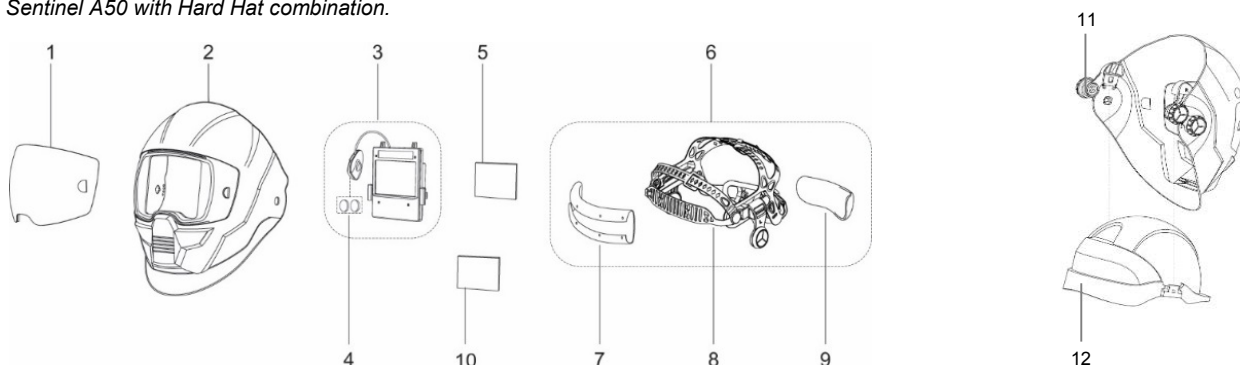
Ordering Information

Sentinel A50	0700000800
--------------	------------

Wear and Spare Parts

1	Front Cover Lens Clear HD	0700000823
1	Front Cover Lens Amber HD	0700000824
1	Front Cover Lens Clear	0700000802
1	Front Cover Lens Amber	0700000803
2	Sentinel Helmet Shell	0700000804
3	Auto-Darkening Filter (excl. batteries)	0700000806
4	2 x CR2450 lithium battery	0700000807
5	Inside Cover Lens	0700000808
6	Headgear Assembly (Including Sweat Bands)	0700000809
7	Front Sweat Band	0700000810
8	Headgear	0700000811
9	Rear Sweat Band	0700000812
10	Magnifying Glass +1.0 Diopter	0367951001
10	Magnifying Glass +1.5 Diopter	0367951002
10	Magnifying Glass +2.0 Diopter	0367951003
10	Magnifying Glass +2.5 Diopter	0367951004
11	Sentinel Hard Hat Adapter*	0700000619
12	Concept Hard Hat Yellow	0700000052
12	Concept Hard Hat White	0700000135
	Sentinel Bandana	0700000821
	Sentinel Protective Hood	0700000828

* For use with Concept Hard Hat. For details on assembly please see separate user guide. Hard Hat Adapter replaces Headgear 0700000809 for the Sentinel A50 with Hard Hat combination.

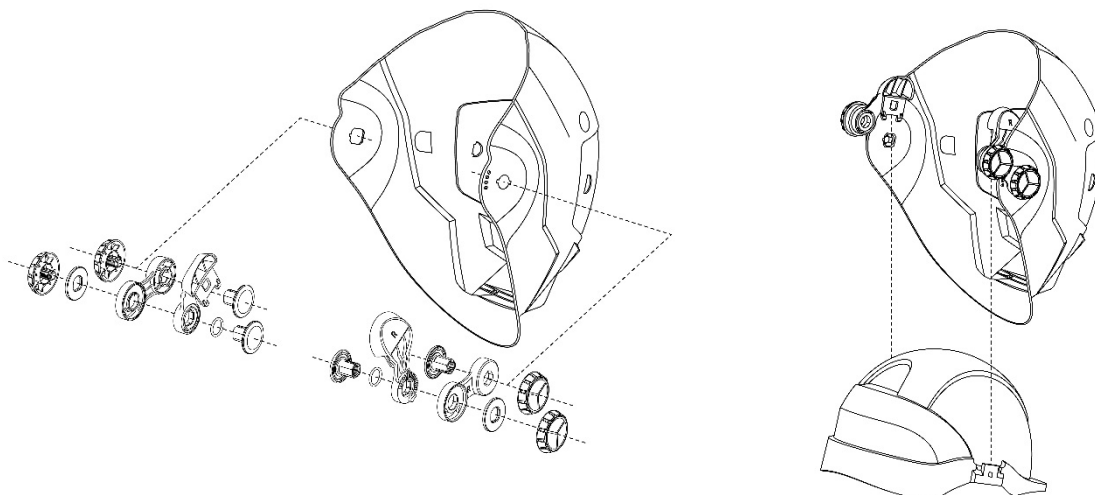


SENTINEL™ A50

Hard Hat Adapter



The Sentinel hard hat adapter is designed for use with the ESAB hard hat (0700000052). Easy to assemble - simply remove the headgear from the Sentinel A50 helmet, assemble the hard hat adapter, insert the hard adapter into the hard hat slot.



Additional Accessories



HD Front Cover Lens



Magnifying Diopter Lens



Protective Hood



ESAB / esab.com

